

# Prestige 3D

Prestige 3D is a family of three compartment trunking from MK Electric, which satisfies the growing demands of cable management installations, as well as providing greater trunking depth to cater for Cat 5e, 6 and 7 structured cabling. Prestige 3D is rich in unique features offering greater cabling capacity and improved aesthetics.



PRESTIGE 3D  
**DADO AND SKIRTING**



PRESTIGE 3D  
**ANTIBAC BLUE**



PRESTIGE 3D  
**COMPACT**

## PRESTIGE 3D DADO AND SKIRTING

Prestige 3D Dado and Skirting offers a comprehensive range of Cat 5e, 6 and 7 compliant full 3 compartment trunking with maximum cable capacity.

- Fully Cat 5e, 6 and 7 compliant
- Patented Data Sweep maximises cable capacity without the need for bulbous corners

## PRESTIGE 3D ANTIBAC BLUE

Prestige 3D Antibac Blue offers an antibacterial cable management solution for power and data distribution in environments where hygiene is a priority. Prestige 3D Antibac Blue is designed to kill bacteria which can grow on surfaces such as trunking systems. It uses a silver based additive inherent within the PVCu which acts as an effective weapon in fighting harmful bacteria such as MRSA. Independent laboratory tests show kill rate of >99.9% over a 24 hour period for MRSA, and Klebsiella pneumoniae.

- Improved aesthetics with single piece covers
- All PVC extrusions manufactured from 100% recycled materials\*

## PRESTIGE 3D COMPACT

Prestige 3D Compact is a Dado system which has a smaller footprint and offers a solution where space is restricted such as above radiators and below window sills. Cables are run in the top and bottom compartments allowing the full depth of the centre compartment for termination to devices. The Compact range is a lower price alternative especially if there are low quantities of cable to manage.

- 10 Year guarantee

\*Based on 2014 consumption



# PRESTIGE 3D DADO AND SKIRTING

## RANGE INTRODUCTION

Prestige 3D Dado and Skirting offers a comprehensive range of Cat 5e, 6 and 7 compliant compartment trunking with maximum cable capacity.

Prestige 3D meets both the demands for easier and faster installation while maintaining high aesthetics.

### HOW TO SPECIFY

A range of 3 compartment Dado and Skirting manufactured from recycled PVCu, designed with a curved covers to compliment MK Logic Plus accessories. Cat 5e, 6 and 7 compliant on all Tees, Angles, Internal and External corners utilising data sweeps that ensure no loss of capacity without the need for bulky protruding covers. Products to have pre-punched bases and divider knockouts at 100mm intervals to facilitate easy installation without the need for drilling and cutting.

### FEATURES & BENEFITS

#### CAT 5E, 6 & 7 COMPLIANT

Flexible Internal and External Corners, moulded Flat Angles and Tees

#### TOOL FREE CABLE ENTRY

Unique 'open box' mounting frames combined with divider knockouts to provide unhindered tool-free cable entry

#### MAXIMISES CAPACITY

Innovative External Corner Data Sweep allows continuous cable capacity and maintains the minimum trunking depth

#### PRE-DRILLED TRUNKING BASES

Eliminates the need to measure and drill fixing holes on site thus reducing installation time

#### HINGED LID

Supports cables during installation

#### STYLISH AND ROBUST

Curved outer covers that complement MK Logic Plus accessories

#### MADE FROM 100% RECYCLED PVCu\*

#### 10 YEAR GUARANTEE

\*Based on 2014 consumption

MK Electric Catalogue

291



# Prestige 3D Dado and Skirting

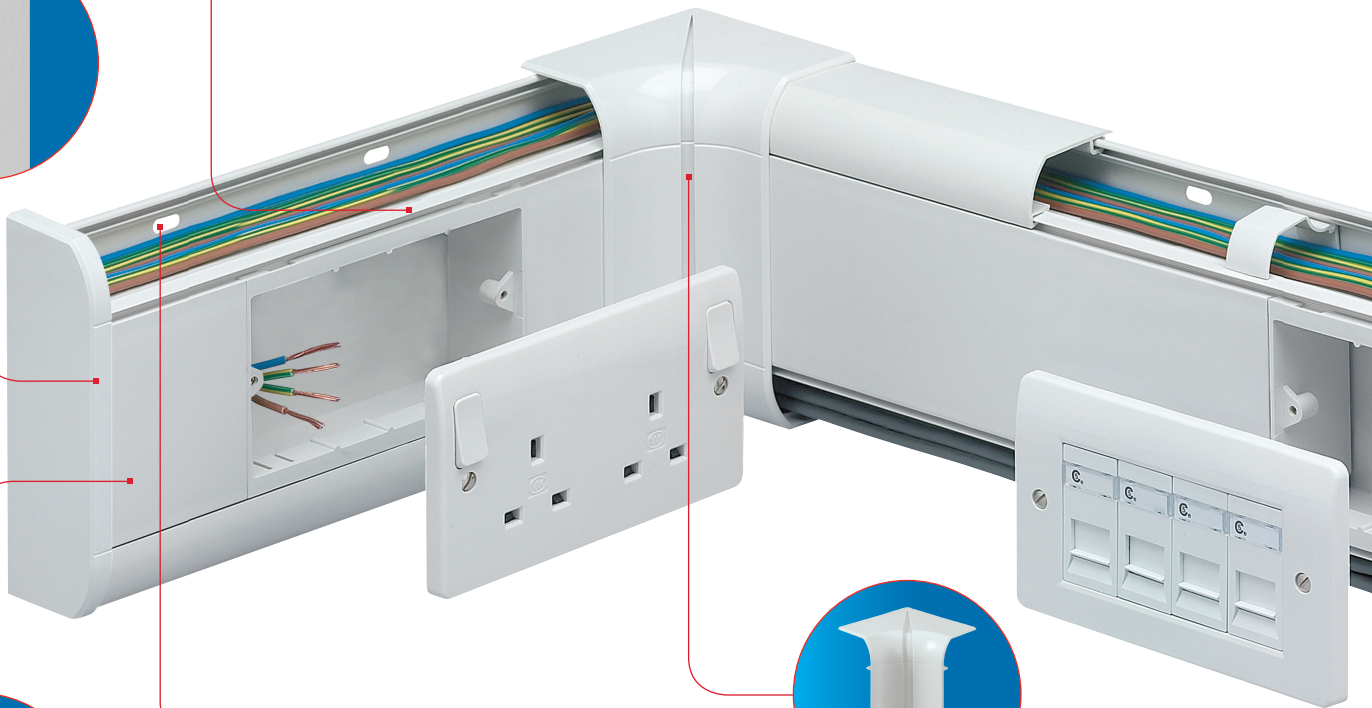
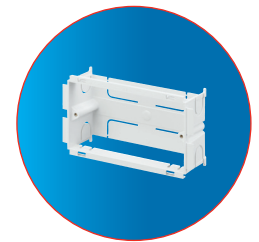
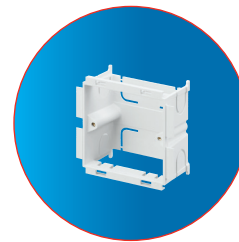


**DIVIDER KNOCKOUTS**  
Wiring is also made easy with 50 x 21mm knockouts at 100mm intervals along compartment dividers, providing instant access to mounting boxes, with no drilling or cutting.

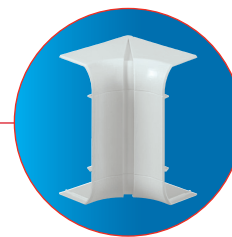
**BACK BOXES**

1, 2 and 3 gang 45mm deep back boxes and 1 and 2 gang 40mm frames ensure Cat 5e, 6 and 7 compliance and ease of connection to power and data devices. The open top/bottom allows unhindered tool free cable entry, through the trunking compartment divider knockout. The back box can slide to align with appropriate knockout (see technical pages for restrictions on use).

**END CAPS**  
Neatly finishes runs of trunking. (Moulding provides internal location for extra security from optional screw fixing).



**PRE-PUNCHED BASES**  
Wall fixing is simplified by the inclusion of pre-punched oval holes at 100mm intervals, ensures no drilling is required.



**INTERNAL CORNER**  
Designed to accommodate irregularities in the squareness of the corner with a +/- 5 degrees flexibility range. The centre split gives maximum adjustment. Covers are radiused and compatible with Cat 5e, 6 and 7 data cabling requirements.

**PART M**  
Compliance to Part M building regulations can be achieved using Part M flange, charcoal devices or charcoal straight cover.



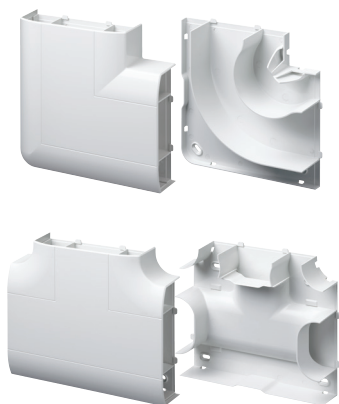
**SCREW FIXING KIT**  
Where higher security is required, e.g. schools, all fitting covers can be secured using the Screw Fixing Kit.

The Screw Fixing Kit is self-locating on the styling line of the system and has a cover to hide the screw head.



Technical Hotline  
+44 (0)1268 563720

# Prestige 3D Dado and Skirting



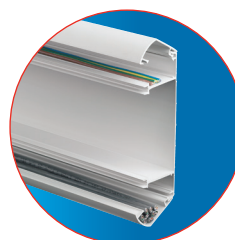
## FLAT TEES AND ANGLES

The ingenuity of the patented tee design allows a variety of cable drop permutations. The tee's bridge can be fitted in two positions increasing the versatility of cable runs whilst maintaining the correct segregation and Cat 5e, 6 and 7 compliance. Screw fixing hole locations have a protective shroud to prevent the chafing of cables.

Both the Flat Angle and Tee compartment divider walls are curved (Cat 5e, 6 and 7 compliant) to allow data cables to lay in with no loss of capacity. The covers are one piece and clip securely into place, and the base is also a single moulded item, giving more strength than fabrication. Joint covers are not required where the tee/angle meets the trunking as the moulded covers now overlap the junction.

## ELECTROMAGNETIC INTERFERENCE

Additional data cable/signal protection is provided by fitting screening divider VP30.

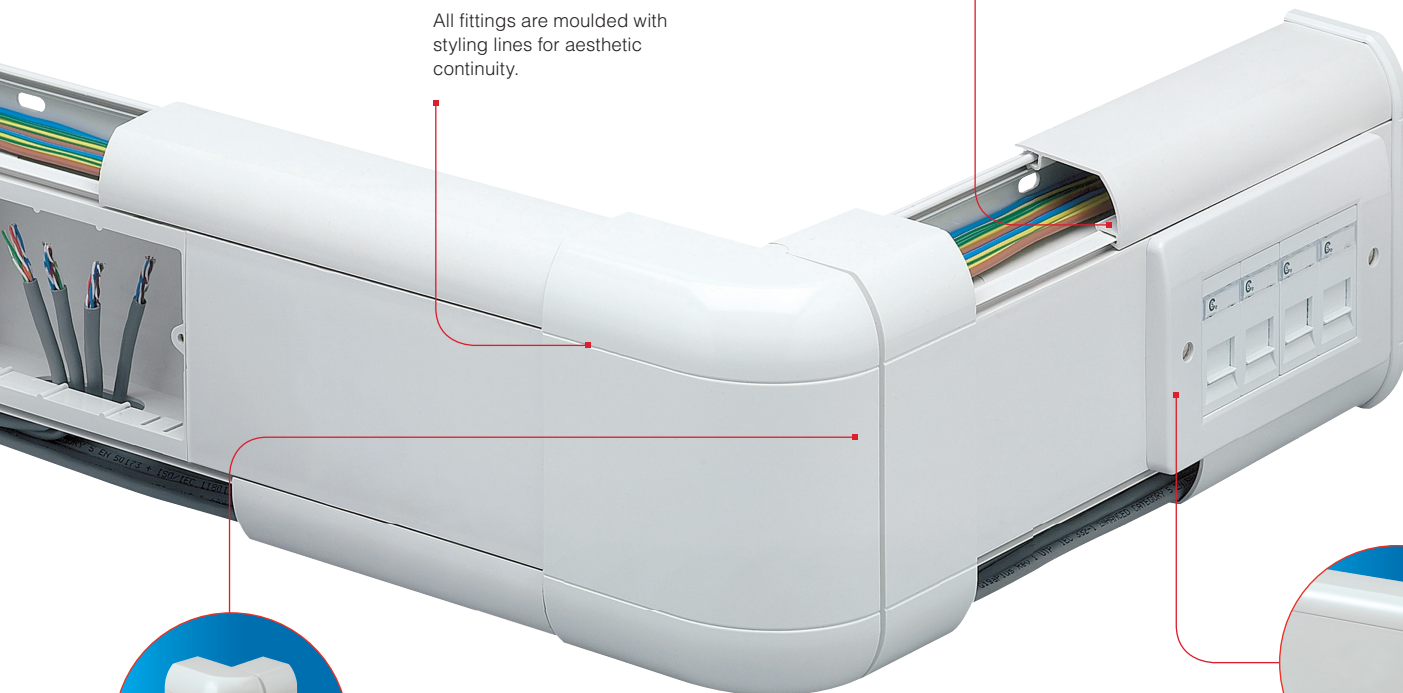


## TRUNKING HINGE LIDS

A two stage location gives a hinge effect, enabling cables to be supported by the trunking cover during the installation. Cover design avoids dust traps and makes cleaning easier, and continues the aesthetics of the trunking.

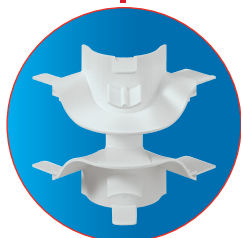
## STYLING LINES

All fittings are moulded with styling lines for aesthetic continuity.



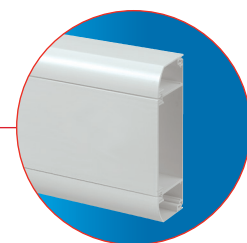
## EXTERNAL CORNER

External Corners accommodate +/- 5 degree irregularities in the squareness of a corner. Corners come ready assembled to click into place, and offset side splits hide the effect of the split line for aesthetics.



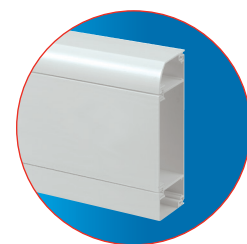
## DATA SWEEP

The unique patented Data Sweep provides Cat 5e, 6 and 7 data cabling compliance, with no loss of capacity and without the need for bulky, protruding corner covers.



## CHOICE OF TWO PROFILES

Available in Dado and Skirting profiles to suit most installations.



Available in white and charcoal.



# Prestige 3D Dado and Skirting

## Component Selector Chart

### Profile Lengths

#### Main Carrier

3 METRES  
6m

#### Straight Cover

3 METRES  
30m

#### Curved Cover

3 METRES  
30m

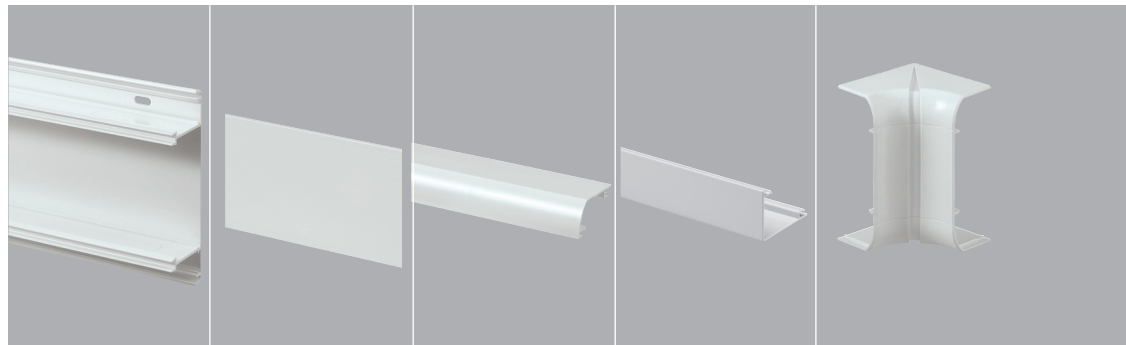
#### Square Cover

3 METRES  
30m

### Fittings

#### Flexible Internal Corner

2



VP180WHI  
VP180CHA

VP100WHI  
VP100CHA\*

VP110WHI X2  
VP110CHA X2

VP181WHI  
VP181CHA



VP180WHI  
VP180CHA

VP100WHI  
VP100CHA\*

VP110WHI  
VP110CHA

VP115WHI  
VP115CHA

VP191WHI  
VP191CHA

\* Use Charcoal lid to help achieve compliance to Part M



Technical Hotline  
+44 (0)1268 563720

# Prestige 3D Dado and Skirting

## Flexible External Corner

CONSISTS OF COVER AND DATA SWEEP

2

## End Cap

SUPPLIED AS LEFT AND RIGHT-HAND PAIR

2

## Joint Cover

5

## Flat Angle

CONSISTS OF COVER AND CARRIER

1

## Flat Tee

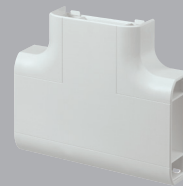
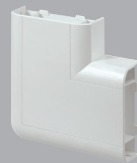
CONSISTS OF COVER AND CARRIER

1

## Adaptor

SUITABLE FOR 20 AND 25MM CONDUIT AND YT2 AND YT4 MINI-TRUNKING

10



VP182WHI  
VP182CHA

VP183WHI  
VP183CHA

VP184WHI  
VP184CHA

VP185WHI  
VP185CHA

VP187WHI  
VP187CHA

VP188WHI  
VP188CHA

VP192WHI  
VP192CHA

VP193WHI  
VP193CHA

VP194WHI  
VP194CHA

FLAT ANGLE UP  
VP195WHI  
VP195CHA

FLAT ANGLE DOWN  
VP196WHI\*\*  
VP196CHA\*\*

VP197WHI  
VP197CHA

VP188WHI  
VP188CHA

\*\* These items are fabricated

# Prestige 3D Dado and Skirting

## Accessories

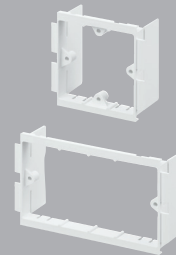
### Socket Spacer

### Part M Flange and Socket Spacer

### Open Back Boxes

### Open Mounting Frames\*

### MCB/RCD Housing



**VP129WHI** 50  
**VP129CHA** 50  
SOCKET SPACER  
25MM WIDE

Visible width is 9mm after installation.

**VX40CHA** 20  
**VX40BLU** 20  
PART M FLANGE FITTED  
BOTH SIDES OF A DEVICE  
**VX41CHA** 10  
**VX41BLU** 10  
PART M SOCKET SPACER

Provides colour contrast with wiring device to comply with Part M. Visible width is 25mm after installation.

**VP121WHI** 25  
1 GANG 45MM  
OPEN BACK BOX  
**VP122WHI** 10  
2 GANG 45MM  
OPEN BACK BOX  
**VP123WHI** 5  
3 GANG 45MM  
OPEN BACK BOX

**VP131WHI** 25  
**VP131CHA** 25  
1 GANG 40MM OPEN  
MOUNTING FRAME  
**VP132WHI** 10  
**VP132CHA** 10  
2 GANG 40MM OPEN  
MOUNTING FRAME

1 Gang frame is used in vertical applications.  
Wings may be removed for greater wiring space.  
\*Open mounting frames are only suitable where services running in the centre compartment are the same as that of the accessory.

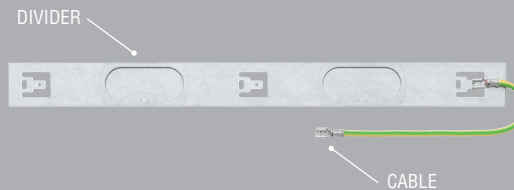
**VP35WHI** 1  
MCB/RCD HOUSING  
WITH COVER  
(ACCESSORY NOT SUPPLIED)

Mounts directly to central compartment of trunking to accept up to 2 x one module products from the Sentry range of MCBs and RCDs (excluding one module RCBOs).

### Cable Retainer

### Screw Fixing Kit

### Screening Divider



**VP105WHI** 50  
CABLE RETAINER

**VTS1000** 20  
SCREW FIXING KIT

**VP30\*\*** 15m  
1.5M SCREENING  
DIVIDER  
**VP31** 10  
300MM SCREEN  
CONNECTING CABLE

\*\* Cable not included





PRESTIGE 3D  
ANTIBAC BLUE  
INSTALLED WITH  
LOGIC PLUS PART  
M SWITCHSOCKET  
OUTLETS

# PRESTIGE 3D ANTIBAC BLUE

## RANGE INTRODUCTION

Prestige 3D Antibac Blue offers an antibacterial cable management solution for power and data distribution in environments where hygiene is a priority.

With ongoing concern over hospital acquired infections such as MRSA, the demand for antibacterial products continues to rise. Prestige 3D Antibac Blue is designed to kill bacteria which can grow on surfaces such as trunking systems. It uses a silver based additive inherent within the PVCu which acts as an effective weapon in fighting harmful bacteria such as MRSA, and Klebsiella pneumoniae. MK offer a complete antibacterial solution, by complementing Prestige 3D Antibac Blue with Logic Plus wiring devices, the entire installation will meet the requirements of an antibacterial specification. The trunking and wiring devices are both open to contact, therefore the control of the spread of bacteria and infections can only be effective with a complete solution. MK's Prestige 3D Antibac Blue range will meet the demands of the Healthcare Trusts, Infection Control Departments or Facilities Managers specifying antibacterial products.

### HOW TO SPECIFY

A range of antibacterial 3 compartment Dado and Skirting, designed with a curved covers to compliment MK Logic Plus accessories. Products to have Blue fluorescent additive to clearly identify antibacterial properties. Cat 5e, 6 and 7 compliant on all Tees, Angles, Internal and External corners utilising data sweeps that ensure no loss of capacity without the need for bulky protruding covers. Products to have pre-punched bases and divider knockouts at 100mm intervals to facilitate easy installation without the need for drilling and cutting.

### FEATURES & BENEFITS

#### UNIQUE ANTIBACTERIAL SOLUTION

Offers a complete antibacterial solution. >99.9% kill rate against MRSA and Klebsiella pneumoniae

#### UNIQUE PATENTED FLUORESCENCE

Demonstrable under UV light, providing customer confidence

#### CAT5E, 6 & 7 COMPLIANT

Flexible internal and external corners, moulded flat angles and tees

#### TOOL FREE CABLE ENTRY

Unique 'open box' mounting frames combined with divider knockouts to provide unhindered tool free cable entry

#### MAXIMISES CAPACITY

Innovative external corner data sweep allows continuous cable capacity and maintains the minimum trunking depth

#### PRE-DRILLED TRUNKING BASES

Eliminates the need to measure and drill fixing holes on site thus reducing installation time

#### TAMPER RESISTANT

Screw fixing Kit available for installations where higher security is required e.g. public buildings, hospitals, schools

#### PART M COMPLIANCE

Achievable utilising MK Logic Plus Graphite accessories or Part M Flange or Socket Spacer

#### 10 YEAR GUARANTEE

# Prestige 3D Antibac Blue

Reports show 300,000 healthcare associated infections were contracted in the UK in 2008, with an annual investment of £270million in infection control.

- Healthcare associated infections cause 5000 deaths a year, at a cost of £1billion.
- Patients recovering from such infections spend on average 10 extra days in hospital, which costs the NHS three times their original treatment.
- The use of antibacterial products supports the existing infection control initiatives such as hand hygiene and barrier nursing.



PRESTIGE 3D **ANTIBAC BLUE** INSTALLED WITH MEIGAN SOCKET OUTLETS

## HOW DOES PRESTIGE 3D ANTIBAC BLUE WORK?

**Prestige 3D Antibac Blue is an antibacterial 3 compartment power and data trunking system designed to kill bacteria which can grow on surfaces.**

It uses a silver based additive inherent within the PVCu which acts as an effective weapon in fighting bacteria such as MRSA and other harmful bacteria. The silver additive is a bactericide and will therefore kill bacteria instead of just restricting their growth.

As the additive is inherent within the PVCu compound the antibacterial protection runs throughout the products themselves. There is no loss of protection where the trunking lengths are cut on-site or if the trunking surface becomes scuffed or scratched.

The antibacterial additive depends on intimate contact between surfaces of the trunking and the user, so any barriers such as dirt or grime will reduce or negate the antibacterial effect.

Prestige 3D Antibac Blue is not intended to replace standard cleaning regimes. It is an additional protection which can only operate efficiently if the surfaces are kept free of dirt and grime.

The antibacterial additive used in Prestige 3D Antibac Blue is registered with the Environmental Protection Agency (EPA) and compliant with the European Biocidal Products Directive (BPD).

The additive provides effective protection against both gram positive and gram negative bacteria, unlike some other anti-bacterial additives which are only effective against gram positive bacteria.



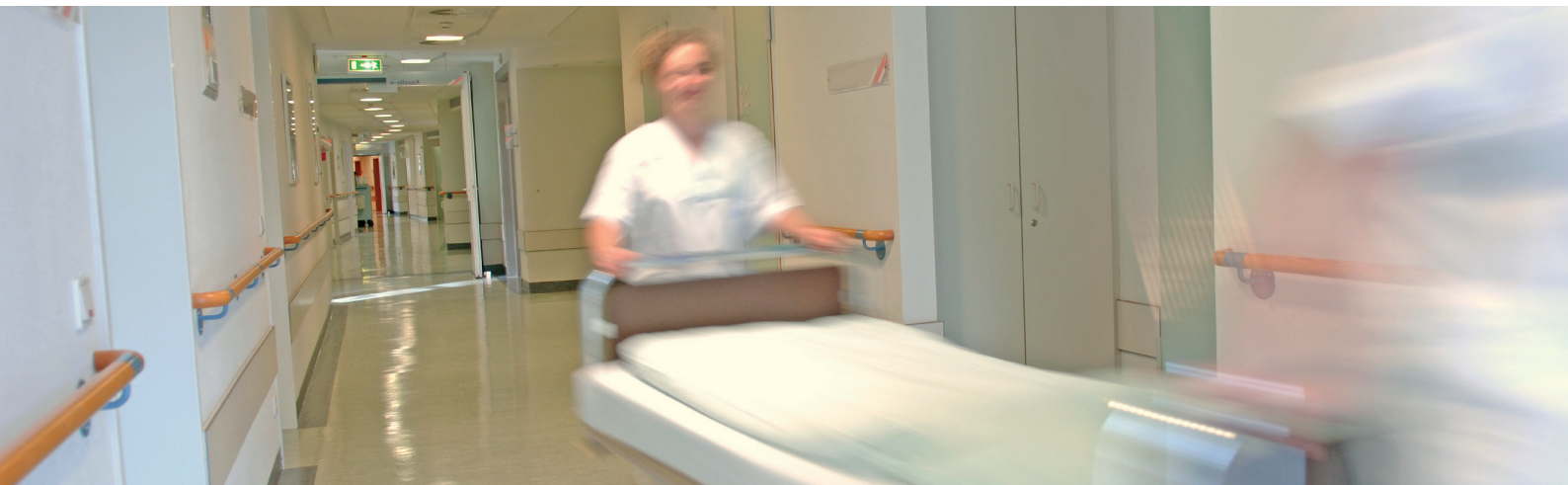
Technical Hotline  
+44 (0)1268 563720

# Prestige 3D Antibac Blue

MK Electric have commissioned independent tests to verify the antibacterial properties of Prestige 3D Antibac Blue.

The results, collected over a 24 hour period shows results of >99.9% kill rates on the organisms MRSA, and Klebsiella pneumoniae.

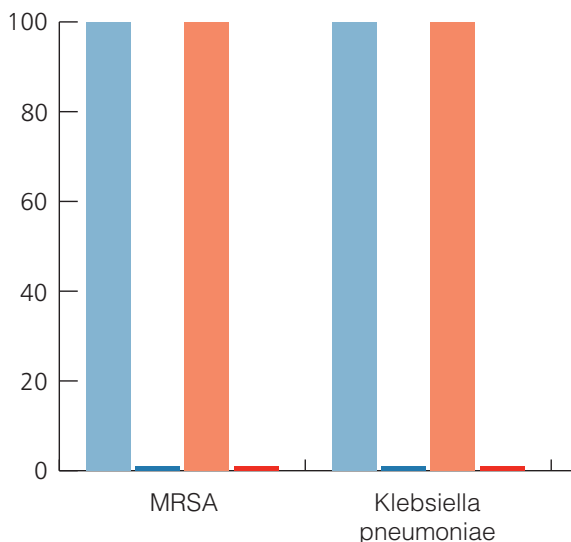
MK Electric have also commissioned independent tests to verify the antibacterial properties of Logic Plus. The results, collected over a 24 hour period shows results of 99.9% kill rates on the organism MRSA and 98.9% kill rates on the organism Klebsiella pneumoniae.



PRESTIGE 3D ANTIBAC BLUE			LOGIC PLUS	
	% ORGANISMS AT START OF TEST	% ORGANISMS AFTER 24 HOUR PERIOD	% ORGANISMS AT START OF TEST	% ORGANISMS AFTER 24 HOUR PERIOD
MRSA	100	<0.1	100	0.1
KLEBSIELLA PNEUMONIAE	100	<0.1	100	1.1



**LOGIC PLUS** SWITCHSOCKET  
OUTLET





# Prestige 3D Antibac Blue



## DIVIDER KNOCKOUTS

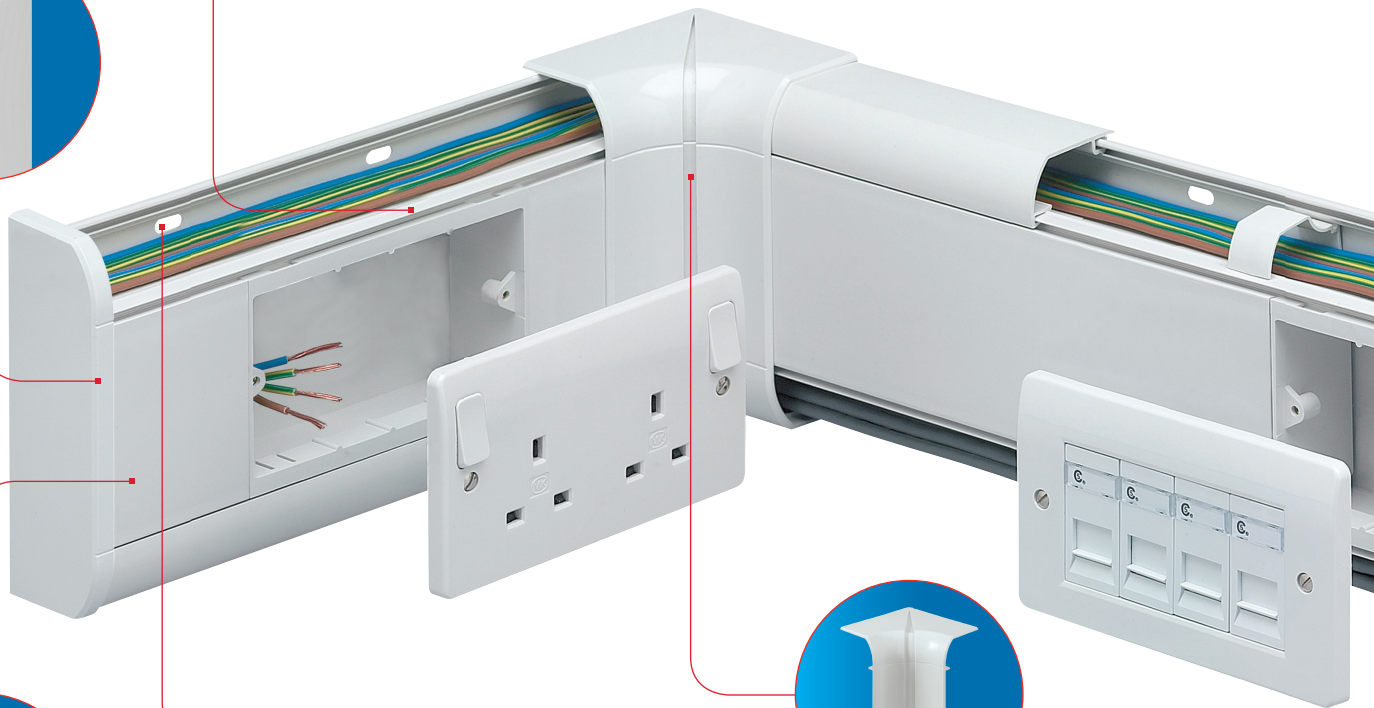
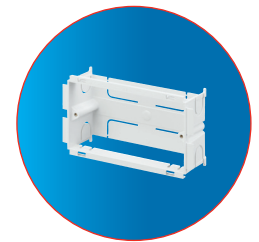
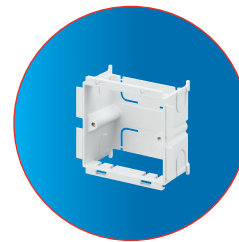
Wiring is also made easy with 50 x 21mm knockouts at 100mm intervals along compartment dividers, providing instant access to mounting boxes, with no drilling or cutting.

## BACK BOXES

1, 2 and 3 gang 45mm deep back boxes and 1 and 2 gang 40mm frames ensure Cat 5e, 6 and 7 compliance and ease of connection to power and data devices. The open top/bottom allows unhindered tool free cable entry, through the trunking compartment divider knockout. The back box can slide to align with appropriate knockout (see technical pages for restrictions on use).

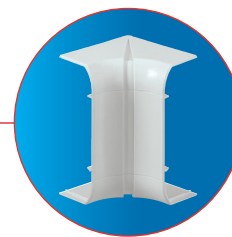
## END CAPS

Neatly finishes runs of trunking. (Moulding provides internal location for extra security from optional screw fixing).



## PRE-PUNCHED BASES

Wall fixing is simplified by the inclusion of pre-punched oval holes at 100mm intervals, ensures no drilling is required.



## INTERNAL CORNER

Designed to accommodate irregularities in the squareness of the corner with a +/- 5 degrees flexibility range. The centre split gives maximum adjustment. Covers are radiused and compatible with Cat 5e, 6 and 7 data cabling requirements.

## PART M

Compliance to Part M building regulations can be achieved using Part M flange or charcoal devices.



## SCREW FIXING KIT

Where higher security is required, e.g. schools, all fitting covers can be secured using the Screw Fixing Kit.

The Screw Fixing Kit is self-locating on the styling line of the system and has a cover to hide the screw head.

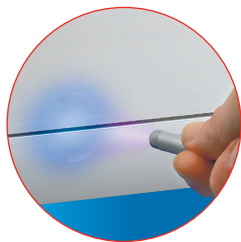


Technical Hotline  
+44 (0)1268 563720

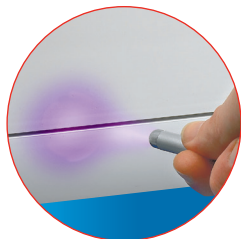
# Prestige 3D Antibac Blue

## UNIQUE FLUORESCENCE

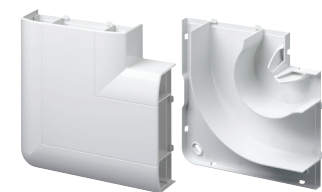
For complete customer confidence, Prestige 3D Antibac Blue features a patented fluorescent additive which glows bright blue under a UV light, unlike standard PVCu which glows dull purple.



PRESTIGE 3D ANTIBAC BLUE

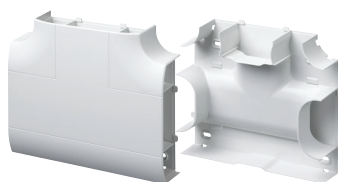


PRESTIGE 3D



## FLAT TEES AND ANGLES

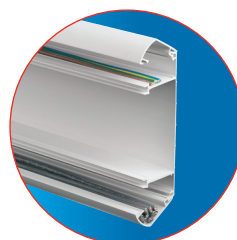
The ingenuity of the patented tee design allows a variety of cable drop permutations. The tee's bridge can be fitted in two positions increasing the versatility of cable runs whilst maintaining the correct segregation and Cat 5e, 6 and 7 compliance. Screw fixing hole locations have a protective shroud to prevent the chafing of cables.



Both the Flat Angle and Tee compartment divider walls are curved (Cat 5e, 6 and 7 compliant) to allow data cables to lay in with no loss of capacity. The covers are one piece and clip securely into place, and the base is also a single moulded item, giving more strength than fabrication. Joint covers are not required where the tee/angle meets the trunking as the moulded covers now overlap the junction.

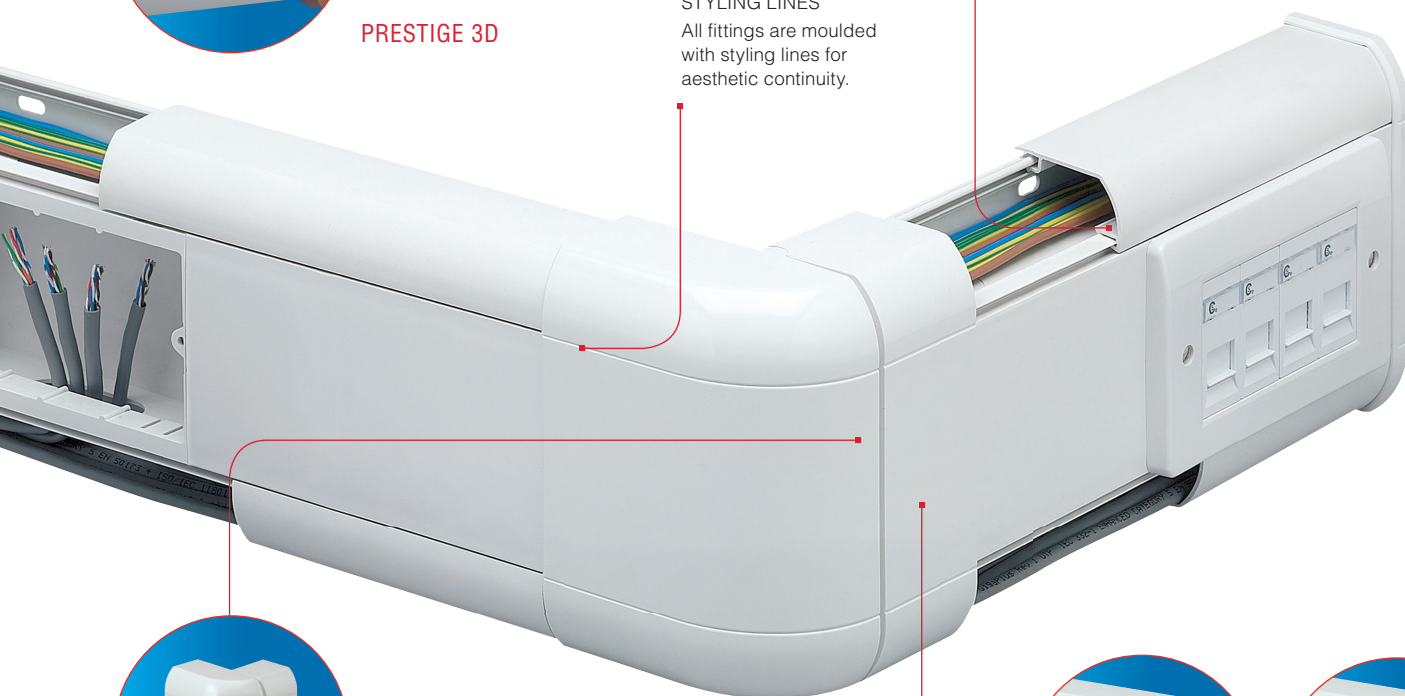
## TRUNKING HINGE LIDS

A two stage location gives a hinge effect, enabling cables to be supported by the trunking cover during the installation. Cover design avoids dust traps and makes cleaning easier, and continues the aesthetics of the trunking.



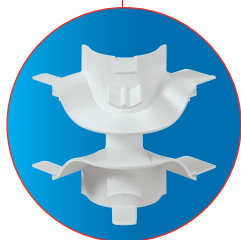
## STYLING LINES

All fittings are moulded with styling lines for aesthetic continuity.



## EXTERNAL CORNER

External Corners accommodate +/- 5 degree irregularities in the squareness of a corner. Corners come ready assembled to click into place, and offset side splits hide the effect of the split line for aesthetics.

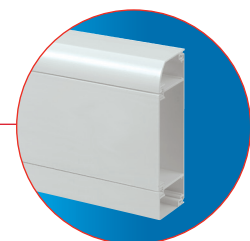
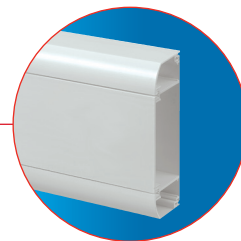


## DATA SWEEP

The unique patented Data Sweep provides Cat 5e, 6 and 7 data cabling compliance, with no loss of capacity and without the need for bulky, protruding corner covers.

## ELECTROMAGNETIC INTERFERENCE

Additional data cable/signal protection is provided by fitting screening divider VP30.



## CHOICE OF TWO PROFILES

Available in Dado and Skirting profiles to suit most installations.

# Prestige 3D Antibac Blue

## Profile Lengths

Component  
Selector  
Chart

**Main  
Carrier\***

3 METRES  
6m

**Straight  
Cover**

3 METRES  
6m

**Curved  
Cover**

3 METRES  
30m

**Square  
Cover**

3 METRES  
30m

## Fittings

**Flexible  
Internal  
Corner**

2

**Flexible  
External  
Corner**

CONSISTS OF  
COVER AND  
DATA SWEEP

2

**End Cap**

SUPPLIED  
AS LEFT AND  
RIGHT-HAND  
PAIR 2



VP180WHI

VPAB100WHI

VPAB110WHI  
X2

VPAB181WHI

VPAB182WHI

VPAB183WHI



VP180WHI

VPAB100WHI

VPAB110WHI

VPAB115WHI

VPAB191WHI

VPAB192WHI

VPAB193WHI

\* Carrier components do not require the antibacterial additive as they have no exposure once the installation is complete. As such, the standard main carrier is sufficient, as are standard back boxes, mounting frames and cable retainers. The carrier components of the External Corner, Flat Angle and Flat Tee are also standard PVCu due to no exposure once installation is complete.





Technical Hotline  
+44 (0)1268 563720

# Prestige 3D Antibac Blue

CABLE MANAGEMENT  
PERIMETER AND  
DISTRIBUTION

## Accessories

### Joint Cover

2



### Flat Angle

CONSISTS OF  
COVER AND  
CARRIER

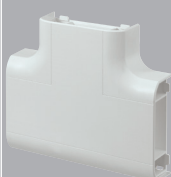
1



### Flat Tee

CONSISTS OF  
COVER AND  
CARRIER

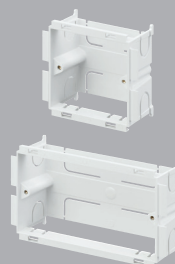
1



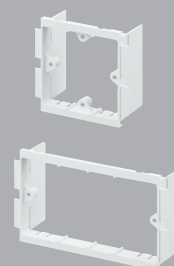
### Flange and Socket Spacer



### Open Back Boxes



### Open Mounting Frames\*



VPAB184WHI

VPAB185WHI

VPAB187WHI

**VXAB40CHA\*** 20  
PART M FLANGE FITTED  
BOTH SIDES OF A DEVICE

**VXAB41CHA\*** 10  
PART M SOCKET SPACER

**VPAB129WHI\*\*** 50  
SOCKET SPACER

Provides colour contrast with  
wiring device to comply with  
Part M.

\* Visible width is 25mm after  
installation.

\*\* Visible width is 9mm after  
installation.

**VP121WHI** 25  
1 GANG 45MM  
OPEN BACK BOX

**VP122WHI** 10  
2 GANG 45MM  
OPEN BACK BOX

**VP123WHI** 5  
3 GANG 45MM  
OPEN BACK BOX

**VP131WHI** 25  
1 GANG 40MM OPEN  
MOUNTING FRAME

**VP132WHI** 10  
2 GANG 40MM OPEN  
MOUNTING FRAME

1 Gang frame is used in vertical  
applications.  
Wings may be removed for greater  
wiring space.

\*Open mounting frames are only  
suitable where services running in  
the centre compartment are  
the same as that of the accessory.

VPAB194WHI

FLAT ANGLE  
UP  
VPAB195WHI

FLAT ANGLE  
DOWN  
VPAB196WHI

VPAB197WHI

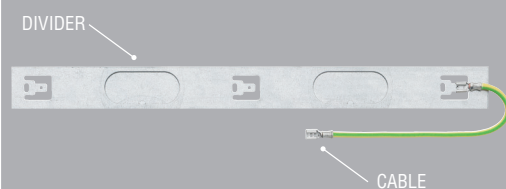
### Cable Retainer



### Screw Fixing Kit



### Screening Divider



**VP105WHI** 50  
CABLE RETAINER

**VTSAB1000WHI** 20  
SCREW FIXING KIT

**VP30\*\*** 15m  
1.5M SCREENING  
DIVIDER

**VX31** 10  
300MM SCREEN  
CONNECTING CABLE

\*\*Cable not included



# CASE STUDY

## GLASGOW ROYAL INFIRMARY GETS A HEALTHY DOSE OF PRESTIGE 3D ANTIBAC BLUE

Infection control is a major concern in the healthcare sector. To help reduce the risk of spreading infections, bacteria and more, Glasgow Royal Infirmary's Intensive Care Unit installed more than 55 metres of Prestige 3D Antibac Blue during a recent refurbishment — becoming the first hospital in the UK to improve patient and staff safety through antibacterial cabling.

### BENEFITS

#### COMPLETE SOLUTION

Only MK Electric offers a complete antibacterial solution that includes both wiring devices and cable management, but the single course for every product was just one of the reasons that the Glasgow Royal Infirmary chose Prestige 3D Antibac Blue. The product is also complete in that it offers effective protection against both gram-positive and gram-negative bacteria rather than just one.

#### BEYOND HEALTHCARE

Of course, the hospital would not have chosen Prestige 3D Antibac Blue if it wasn't also an outstanding cable management solution above and beyond its health benefits. Like any healthcare facility, Glasgow Royal Infirmary's Intensive Care Unit has a large number of people moving about at any given time. The cable management provided by MK Electric not only ensures proper cabling to all equipment, but also ensures a clean, uncluttered work area for added safety.

For Glasgow Royal Infirmary's Intensive Care Unit, Prestige 3D Antibac Blue is an investment that's sure to have a healthy return.





# PRESTIGE 3D COMPACT

## RANGE INTRODUCTION

Prestige 3D Compact completes the 3D offering with all the 3D benefits of faster installation, Cat 5e, 6 and 7 compliance and improved aesthetics, but in a smaller footprint & ideal for confined locations.

The new concept uses the full trunking depth with a sliding open box (frame) principle to ease power and data connections.

### HOW TO SPECIFY

A range of compact 3 compartment Dado and Skirting manufactured from recycled PVCu, designed with a curved covers to compliment MK Logic Plus accessories. Cat 5e, 6 and 7 compliant on all Tees, Angles, Internal and External corners utilising data sweeps that ensure no loss of capacity without the need for bulky protruding covers. Products to have pre-punched bases and divider knockouts at 100mm intervals to facilitate easy installation without the need for drilling and cutting.

### FEATURES & BENEFITS

#### CAT5E, 6 & 7 COMPLIANT

Flexible Internal and External Corners, moulded Flat Angles and Tees

#### TOOL FREE CABLE ENTRY

Unique 'open box' mounting frames combined with divider knockouts to provide unhindered tool-free cable entry

#### MAXIMISES CAPACITY

Innovative External Corner Data Sweep allows continuous cable capacity and maintains the minimum trunking depth

#### PRE-DRILLED TRUNKING BASES

Eliminates the need to measure and drill fixing holes on site thus reducing installation time

#### HINGED LID

Mounting frames for LJU6/Euro data outlets to maximise use of space

#### STYLISH AND ROBUST

Curved outer covers that complement MK Logic Plus accessories

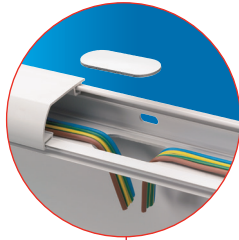
#### MADE FROM 100% RECYCLED PVCu\*

#### 10 YEAR GUARANTEE

\*Based on 2014 consumption



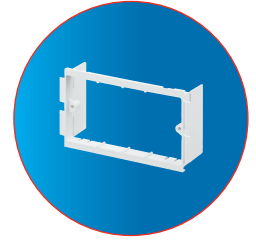
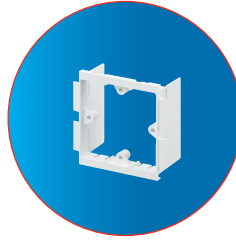
# Prestige 3D Compact



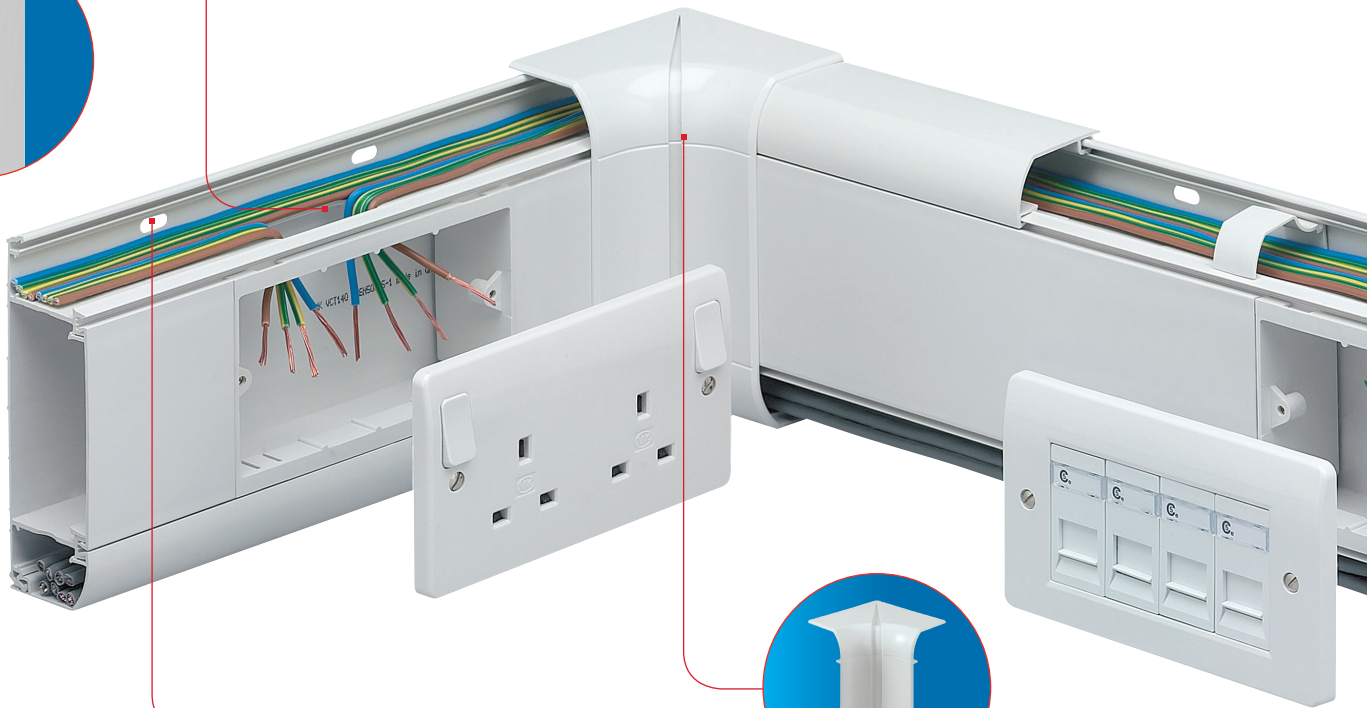
**DIVIDER KNOCKOUTS**  
Wiring is also made easy with 50mm x 21mm knockouts at 100mm intervals along compartment dividers, providing instant access to mounting boxes with no drilling or cutting.

**MOUNTING FRAMES**

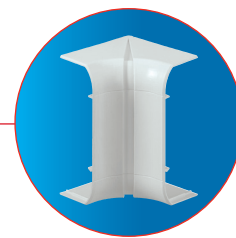
1 gang and 2 gang 'open box' mounting frames use the full trunking depth allowing ease of connection to power and data devices. The open top/bottom allows unhindered tool free cable entry through the trunking compartment divider knockout. The frame can slide to align with appropriate knockout.



**END CAPS**  
Neatly finishes runs of trunking. Moulding provides internal location for extra security from optional screw fixing.



**PRE-PUNCHED BASES**  
Wall fixing is simplified by the inclusion of pre-punched oval holes at 100mm intervals, ensures no drilling is required.



**INTERNAL CORNER**

Designed to accommodate irregularities in the squareness of the corner with a +/- 5 degree flexibility range. The centre split gives maximum adjustment. Covers are radiused and compatible with Cat 5e, 6 and 7 data cabling requirements.

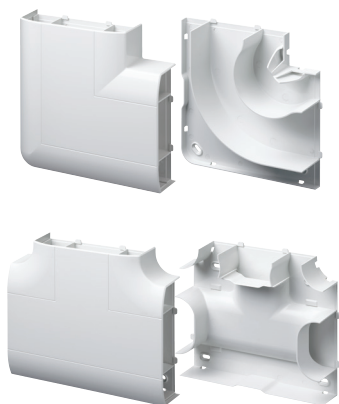


**SCREW FIXING KIT**  
Where higher security is required, all fitting covers can be secured using the Screw Fixing Kit. The Screw Fixing Kit is self-locating on the styling line of the system and has a cover to hide the screw head.



Technical Hotline  
+44 (0)1268 563720

# Prestige 3D Compact



## FLAT TEES AND ANGLES

The ingenuity of the patented tee design allows a variety of cable drop permutations. The tee's bridge can be fitted in two positions increasing the versatility of cable runs whilst maintaining the correct segregation and Cat 5e, 6 and 7 compliance. Screw fixing hole locations have a protective shroud to prevent the chafing of cables.

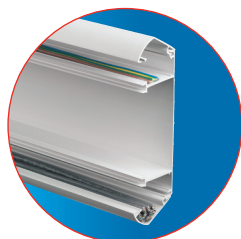
Both the Flat Angle and Tee compartment divider walls are curved (Cat 5e, 6 and 7 compliant) to allow data cables to lay in with no loss of capacity. The covers are one piece and clip securely into place, and the base is also a single moulded item, giving more strength than fabrication. Joint covers are not required where the tee/angle meets the trunking as the moulded covers now overlap the junction.

## ELECTROMAGNETIC INTERFERENCE

Additional data cable/signal protection is provided by fitting screening divider VCT30.

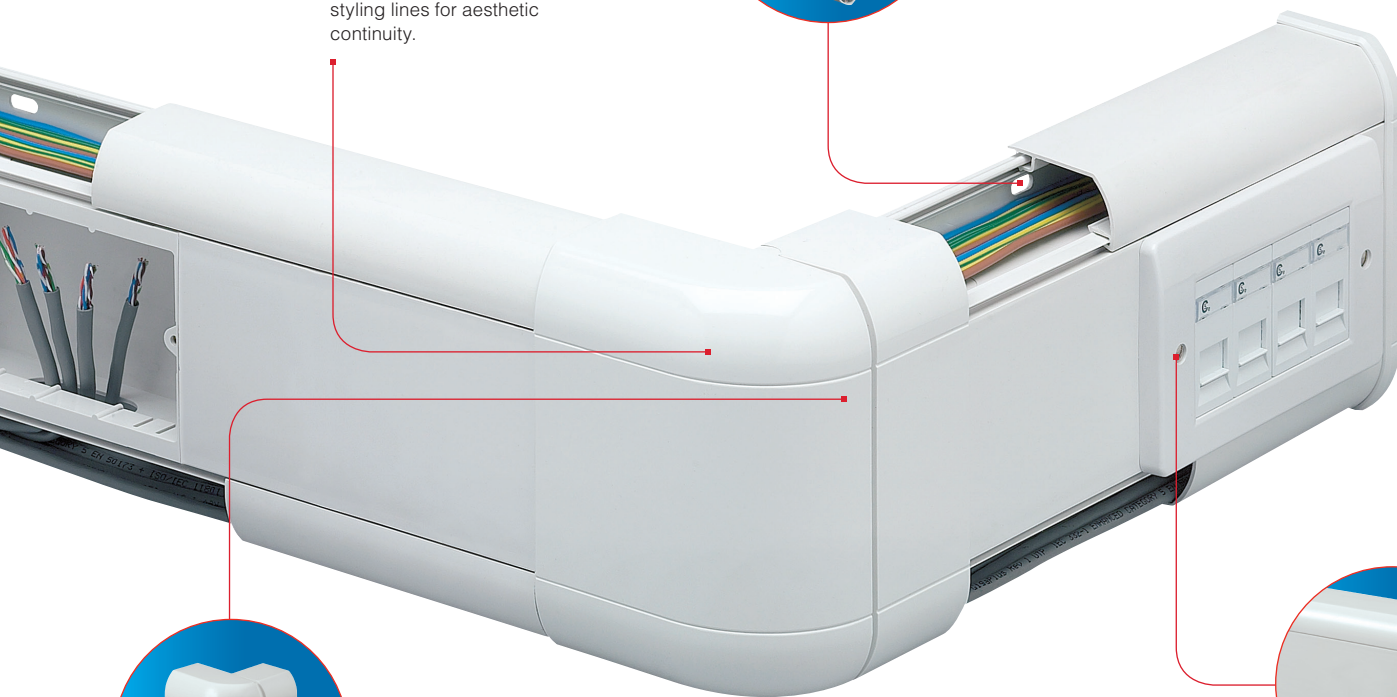
## STYLING LINES

All fittings are moulded with styling lines for aesthetic continuity.



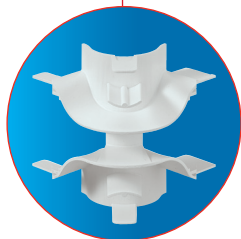
## TRUNKING HINGED LIDS

A patented two stage location gives a hinge effect, enabling cables to be supported by the trunking cover during the installation. Cover design avoids dust traps and makes cleaning easier and continues the aesthetics of the trunking.



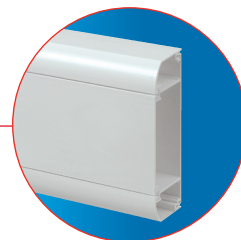
## EXTERNAL CORNER

External Corners accommodate +/- 5 degree irregularities in the squareness of a corner. Corners come ready assembled to click into place, and offset side splits hide the effect of the split line for aesthetics.



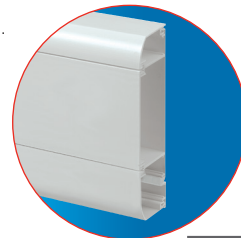
## DATA SWEEP

The unique patented Data Sweep provides Cat 5e, 6 and 7 data cabling compliance, with no loss of capacity and without the need for bulky, protruding corner covers.



## CHOICE OF TWO PROFILES

Available in Dado and Skirting profiles to suit most installations.



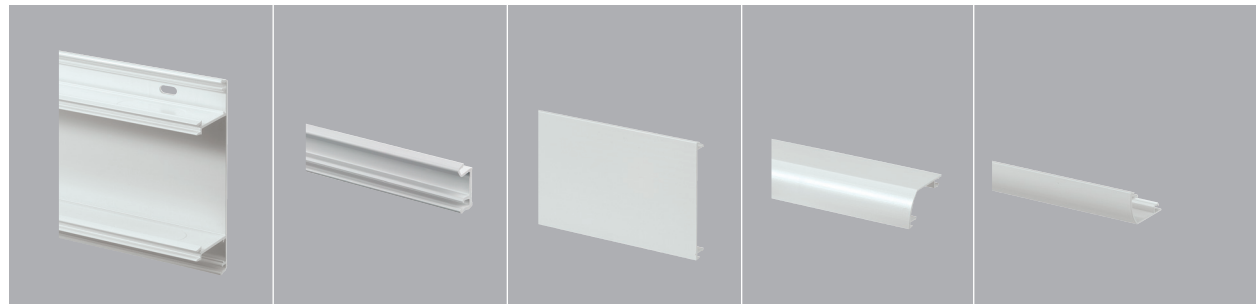
Available in white and charcoal.

# Prestige 3D Compact

## Profile Lengths

<b>Component Selector Chart</b>	<b>Main Carrier</b>	<b>Extension Carrier</b>	<b>Straight Cover</b>	<b>Curved Cover</b>	<b>Extension Cover</b>
---	-------------------------	------------------------------	---------------------------	-------------------------	----------------------------

3 METRES 6m	3 METRES 15m	3 METRES 30m	3 METRES 30m	3 METRES 15m
----------------	-----------------	-----------------	-----------------	-----------------



VCT140WHI		VCT100WHI	VCT110WHI X2	
-----------	--	-----------	--------------	--



VCT140WHI	VCT160WHI	VCT100WHI	VCT110WHI	VCT120WHI
-----------	-----------	-----------	-----------	-----------



Technical Hotline  
+44 (0)1268 563720

# Prestige 3D Compact

## Fittings

**Flexible Internal Corner**

2

**Flexible External Corner**

CONSISTS OF COVER AND DATA SWEEP

2

**End Cap**

SUPPLIED AS PAIR OF LEFT AND RIGHT-HAND END CAPS

2

**Joint Cover**

**Flat Angle Up**

5

CONSISTS OF COVER AND CARRIER

**Flat Angle Down**

2

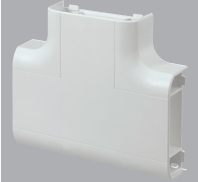
CONSISTS OF COVER AND CARRIER

**Flat Tee**

2

CONSISTS OF COVER AND CARRIER

1



VCT141WHI

VCT142WHI

VCT143WHI

VCT144WHI

VCT145WHI

VCT145WHI

VCT147WHI

VCT161WHI

VCT162WHI

VCT163WHI  
(2X L/R PAIRS)

VCT164WHI

VCT165WHI

VCT166WHI

VCT167WHI  
(UP ONLY)



# Prestige 3D Compact

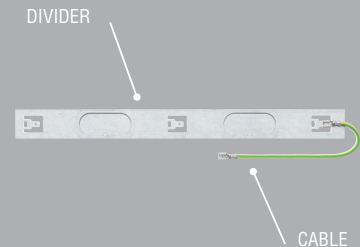
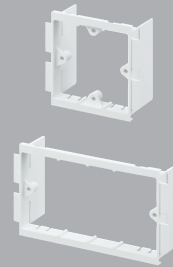
## Accessories

### Socket Spacer

### Part M Flange and Socket Spacer

### Open Mounting Frames

### Screening Divider



**VCT25WHI**  
SOCKET SPACER

10

Visible width is 9mm after installation.

**VX40CHA**  
**VX40BLU**  
PART M FLANGE FITTED  
BOTH SIDES OF A DEVICE  
**VX41CHA**  
**VX41BLU**  
PART M SOCKET SPACER

20

20

10

10

Provides colour contrast with wiring device to comply with Part M.  
Visible width is 25mm after installation.

**VCT121WHI**  
1 GANG 40MM  
OPEN MOUNTING FRAME  
**VCT122WHI**  
2 GANG 40MM  
OPEN MOUNTING FRAME

25

10

Wings may be removed for increased wiring space.

**VCT30\***  
1.5M SCREENING DIVIDER  
**VX31**  
300MM SCREEN CONNECTING CABLE

15m

10

\* Cable not included

### Adaptors

SUITABLE FOR 20 AND 25MM CONDUIT AND YT2 AND YT4 MINI-TRUNKING. CONSISTS OF COVER AND CENTRE COMPARTMENT CABLE BRIDGE

### Cable Retainer

### Screw Fixing Kit

### MCB/RCD Housing



**VCT148WHI**  
FOR USE WITH COVER VCT110WHI

10

**VCT105WHI**  
CABLE RETAINER

50

**VTS1000**  
SCREW FIXING KIT

20

**VCT35WHI**  
MCB/RCD HOUSING WITH COVER  
(ACCESSORY NOT SUPPLIED)

1

Mounts directly to central compartment of trunking to accept up to 2 x one module products from the Sentry range of MCBs and RCDs (excluding one module RCBOs).